

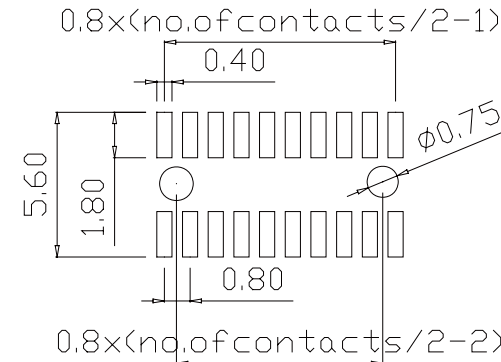
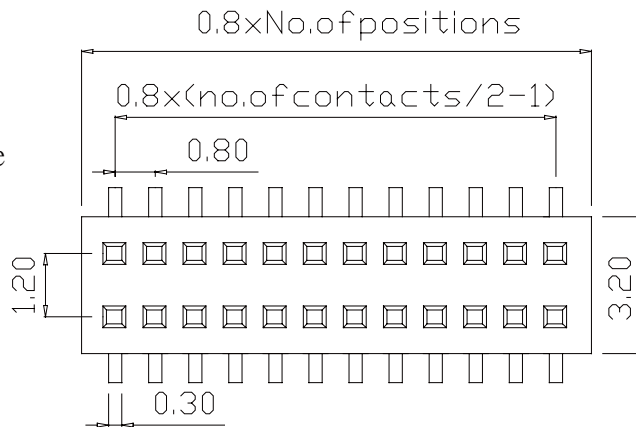
BY	CHK	REVISION RECORD MODIFICATIONS	DATE	REV.
ALLEN		RELEASE TO PRODUCTION	2007,7,29	1.0

SPECIFICATION

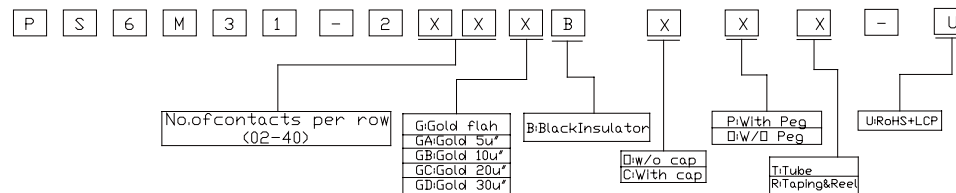
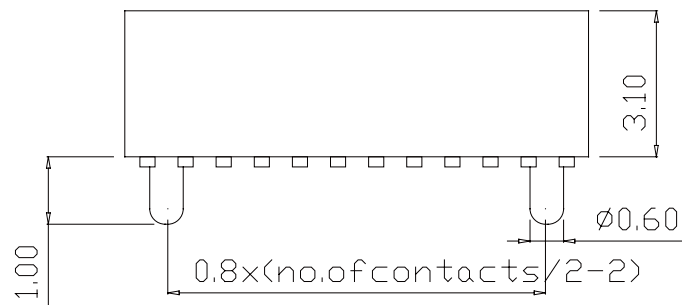
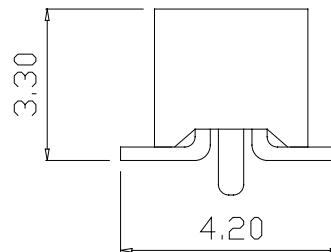
Current Rate: 1 AMP
 Insulation Resistance: 1000mΩ Min
 Contact Resistance: 20mΩ Max
 Dielectric voltage: 500V AC for one minute
 Operation Temperature: -40°C to +105°C

MATERIAL

Insulator: Polyester, UL94v-0
 Standard: LCP
 Contact Pin: Phosphor Bronze
 Contact Plated: Gold Plated



Recommended PCB Layout
 (PCB TOLERANCE ±0.05)



APPRO	CHECK	DRAWN	PART NO.	PS6M31-2XXXXBXXX-U			DESCRIPTION	
			ITEM NO.					
			DRAW NO.					
			UNIT	mm	SCALE	no		
			TOLER		NO.			
							Tel: 0769 22020068 Fax: 0769 22020069 E-mail: sales@vigortec.com	